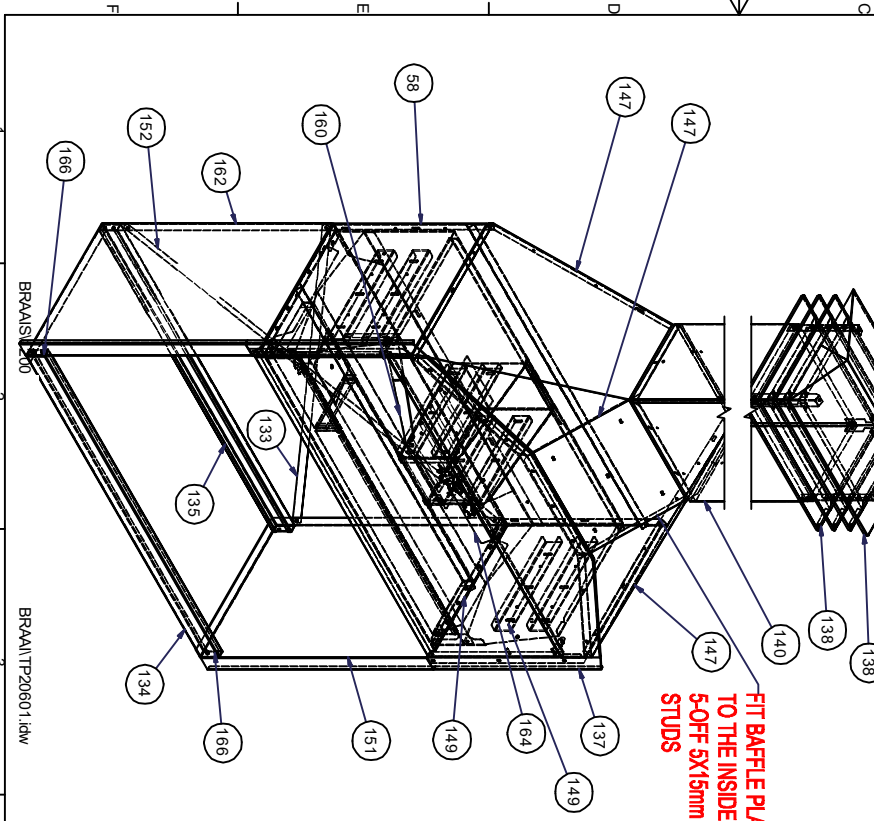
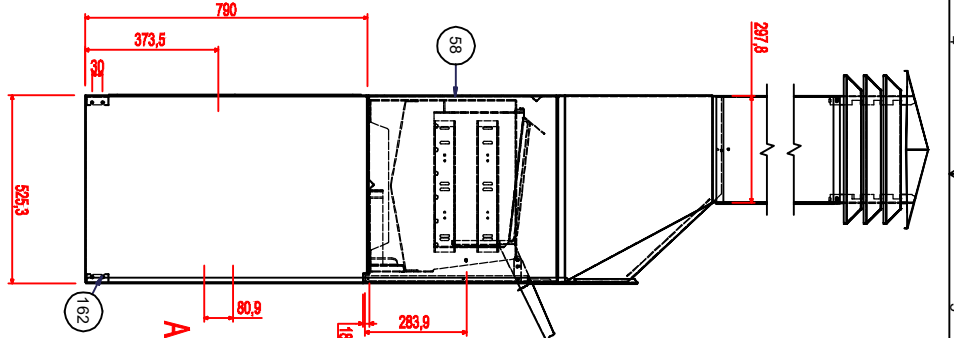


ITEM	QTY	PART NUMBER	DESCRIPTION	MASS
58	1	TP9688C		5,116 kg
84	4	M5X2-MINARB-SS		0,000 kg
91	1	TP15963K		0,003 kg
108	1	TP15963P		0,002 kg
109	1	M5X10-STUD		0,000 kg
111	2	TP9688A		25,862 kg
133	1	TP20601J2_MIR		0,068 kg
134	1	TP20562J		2,546 kg
135	1	TP20601S_MIR		0,318 kg
137	1	TP9688E		3,213 kg
138	1	TP14021		2,882 kg
140	1	TP20618C		1,219 kg
146	2	M5X20-STUD		0,000 kg
147	1	TP20601Dev3		10,168 kg
148	1	TP9688B		5,116 kg
149	1	TP20601F2		39,085 kg
151	1	TP96888		0,966 kg
152	1	TP20601J2		0,068 kg
060	1	TP8097		0,061 kg
062	1	TP20601F2-4h		0,966 kg
063	1	TP9762Q		7,195 kg
064	1	TP20601S		3,203 kg
165	1	TP20601T		0,242 kg
166	4	M6-2-MINARB		0,000 kg



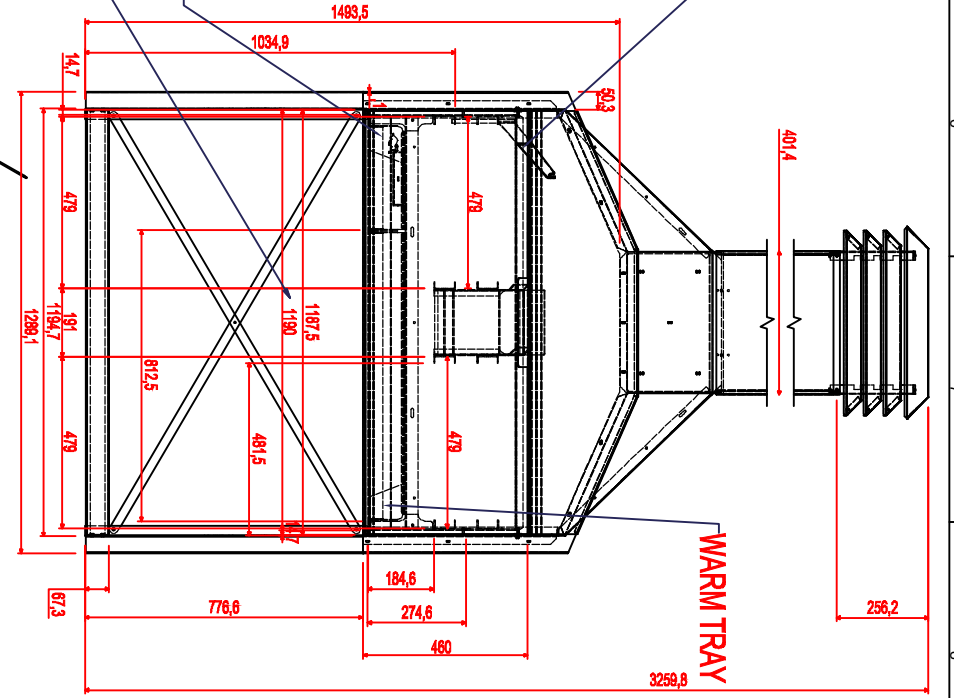
FIT BAFFLE PLATE TO THE INSIDE 5-OFF 5X15mm WELD STUDS

470X460 SS GRID 2-OFF PER UNIT



ASH TRAY

POTLIE HOOK



WARM TRAY

ZONE	REV	DESCRIPTION	DATE	APPROVED
B				JS

REVISION HISTORY	DATE	APPROVED
REV. B	2019-09-30	JS

CLIENT	ORDER NO.	REFERENCE	PROJECT
TPP	Q	20601	BRAA1S

OPERATIONS:	TOLERANCE
1) LASER	±0,1mm
2) BEND	±0,2mm
3) BEND	±0,3mm
4) WELD	±0,5
5) CLEAN	(BS 308 PT3)
6)	
7)	

APPROVALS	DATE	TITLE
DRAWN: Johan Steyn/17	2019/09/03	BRUSHED
APPROVED:		

ORDER DATE	MATERIAL	Dwg. No.	SCALE	SHEET	OF	QTY
2019-09-03	2.0mm 304 SS	TP20601		1	1	1

